

## MBL 350L LED Flashing Beacon

The MBL350L is a medium and long-range LED marine flashing beacon of great luminous output and low consumption. Its luminous source can be formed from 18 to 36 nos. high-power LED diodes, reaching a visibility range of up to 20 nautical miles.

It is engineered to be used in fixed navaid locations, such as poles and towers, where minimum maintenance is required.

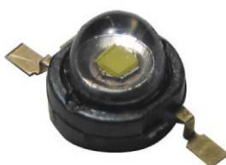
Equipped with six (6) Fresnel elements each level, arrayed in a circular way in a 250mm diameter, made from methacrylate, highly resistant to UV rays, protected by an acrylic shock-resistant lens cover. Everything to provide the longest service life under severe marine atmosphere.

Designed according to IALA Recommendations.

- Optical System**
- Maximum luminous efficiency.
  - Light source formed by 18 to 36 LED high-power diodes.
  - Fresnel lenses arrayed in a 250mm dia.
  - Shock-resistant methacrylate lens cover.
  - Power from 36W to 60W.
  - Nominal visibility range up to 13.4 n.m. (T = 0.74). Range of 20 n.m. (T = 0.85).
  - Vertical divergence at 50% peak intensity: **5°**.
- MF 12 Electronic Flasher**
- Microprocessor based circuit.
  - 256 flash characters, selectable by using minidips, easily programmable.
  - Solar charge regulation up to 8A.
  - Internal photocell.
  - Lux-adjustable day/night threshold and hysteresis cycle.
  - LED failure detection.
  - LED intensity adjustment by PC.
  - Individual LED current adjustment, lineal and high-precision.
  - Integrated temperature sensor.
  - Short-circuit protection.
  - Reverse-polarity and transient-overvoltage protections.
  - Operation status and alarms ready for connection to a remote monitoring system.
  - Double RS-232 serial port for settings adjustment by PC and remote monitoring system.



**PATENTED OPTICAL SYSTEM**



# MBL 350L LED Flashing Beacon

### Specifications

- Nominal Range..... 13.4 n.m.
- Input voltage .....10 to 35V DC.
- Consumption ..... 36W to 60 W.
- Idle current ..... 3 mA.
- Vertical divergence..... 5° at 50% lo.
- LED average life ..... 100,000 hours.

### Materials and Environment

- Lantern made from marine aluminium, polyamide and fibreglass.
- UV stabilised methacrylate lenses.
- Shock resistant acrylic lens cover.
- Temperature range: .....-30° to 70° C.
- Protection class: .....IP67.

### Shipping data

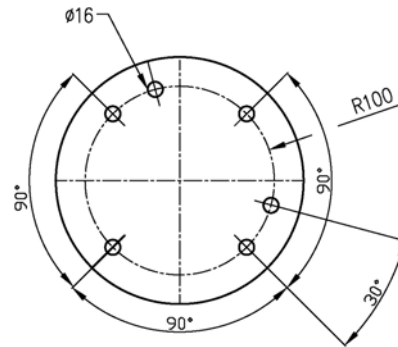
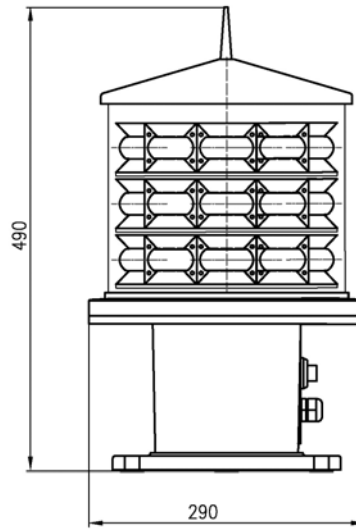
- Net weight: .....8 Kg.
- Shipping weight: .....12 Kg.
- Package size: ....50 x 50 x 90 cm (cartoon).

### Others

- Minimum maintenance.
- Level indicator on lantern.
- Integral bird spike.
- Electromagnetic compatibility  $\text{CE}$ .

### Options

- Other colours available under request.
- Synchronisation via cable or GPS.
- GSM remote monitoring module.
- Lantern made from 100% marine aluminium.



| COLOUR | MBL 350L<br>LUMINOUS INTENSITIES (Cd) |          |          |          |
|--------|---------------------------------------|----------|----------|----------|
|        | 3 levels                              | 4 levels | 5 levels | 6 levels |
| WHITE  | 3,510                                 | 4,680    | 5,850    | 7,020    |
| GREEN  | 2,235                                 | 2,980    | 3,725    | 4,470    |
| RED    | 1,500                                 | 2,000    | 2,500    | 3,000    |
| AMBER  | 1,380                                 | 1,840    | 2,300    | 2,760    |

