



MARINE COMPACT LED LANTERN

MCL 200



The MCL 200 is a compact LED marine lantern, solar self-contained, with great optical efficiency and low consumption, fitted with LED diodes of high intensity, reaching a maximum range of 9 nautical miles and offering a big autonomy.

As a difference from the MCL 180, this lantern is ready to integrate a remote monitoring and synchronization system.

The battery is replaceable, thus the complete lantern disposal is not necessary at the end of battery's life. Standard fixings allow for a quick beacon replacement.

Designed according to IALA Recommendations.

FEATURES

- ✓ High-efficiency luminous system.
Up to 7 nm ($T=0.74$), 9 nm ($T=0.85$).
- ✓ Vertical divergence up to 12° .
- ✓ 360° horizontal output.
- ✓ Average operation lifetime over 10 years.
- ✓ IP 68 watertightness degree (immersion resistant).
- ✓ Double RS-232 serial port for setting adjustments by PC and remote monitoring system.
- ✓ Programming, configuration and operating status via PC, IR programmer or Bluetooth as an option.
- ✓ Ready to integrate remote monitoring via GSM, VHF or satellite, and synchronization module via GPS.
- ✓ Autonomy without solar charging up to 450 hours.
- ✓ Automatic energy management, according to latitude.
- ✓ 4 nos. solar modules of 2.5W each.
- ✓ **PATENTED OPTICAL SYSTEM.**

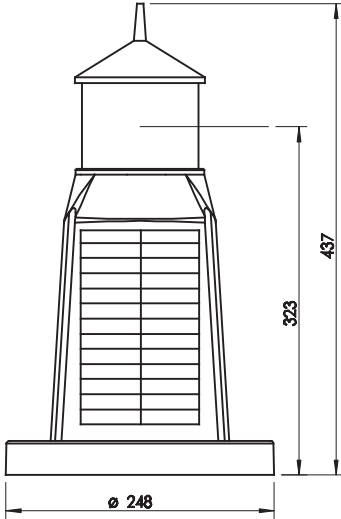


MARINE COMPACT LED LANTERN

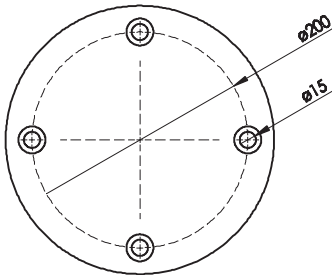
MCL 200



Specifications subject to change without previous notice. Luminous ranges will be affected depending on latitude, flash rhythms and chosen options.



MCL 200 with 12° vertical divergence.



Options

- Infrared (IR) programmer.
- PC programming kit.
- Bluetooth programming.
- Fixing kit for 3 bolts in a 200mm diameter.
- Other specifications available under request.
- MCL 200-SYNC (GPS synchronization).
- MCL 200-TG (GSM remote monitoring).
- MCL 200-TR (Radio remote monitoring).
- MCL 200-TS (Satellite remote monitoring).

Optical System

Light source:	6 nos. ultra-bright LED diodes, with high-precision acrylic lens.
Luminous range:	Up to 7 nm (T=0.74) 9 nm (T=0.85).
Colours available:	White, green, red, amber and blue.
Vertical divergence:	From 5° to 12° (50% lo).
LED average life:	More than 100,000 hours.

Electronic control

Flash rhythms:	256 (6 nos. user selectable).
Day/night threshold:	Adjustable in lux.
Solar charge regulation function:	Regulation in 3 phases.
Settings:	PC / IR programmer (optional Bluetooth).
Energy management:	Dynamic, according to latitude.
Light intensity reduction due to low battery:	Configurable by the user.

Solar modules and battery

Solar modules:	4 nos. of 2.5W each.
Battery:	12 Ah, gelled, maintenance-free.
Autonomy without solar charging:	Up to 450 hours.

Materials and environment

Base:	Glass-fibre reinforced polyamide PA66-GF30.
Lens cover:	Acrylic, UV stabilised.
Vibration resistance:	MIL-STD-202G, Method 204D (5G).
Shock resistance:	MIL-STD-202G, Method 213B.
Watertightness degree:	IP 68.
Fixings:	4 bolts in a 200mm diameter.
Humidity resistance:	100%. Pressure-compensation valve to avoid condensation.
Temperature range:	From -20° to 70°C.
Inside hardware:	Stainless steel.

MCL 200	PEAK INTENSITIES (Cd)	
	VERTICAL DIVERGENCE 5°	VERTICAL DIVERGENCE 12°
COLOUR		
White	231	123
Green	214	135
Red	161	90
Amber	183	96

Other divergences available.



MEDITERRÁNEO SEÑALES MARÍTIMAS, S.L.L.
 mesemar@mesemar.com • www.mesemar.com

